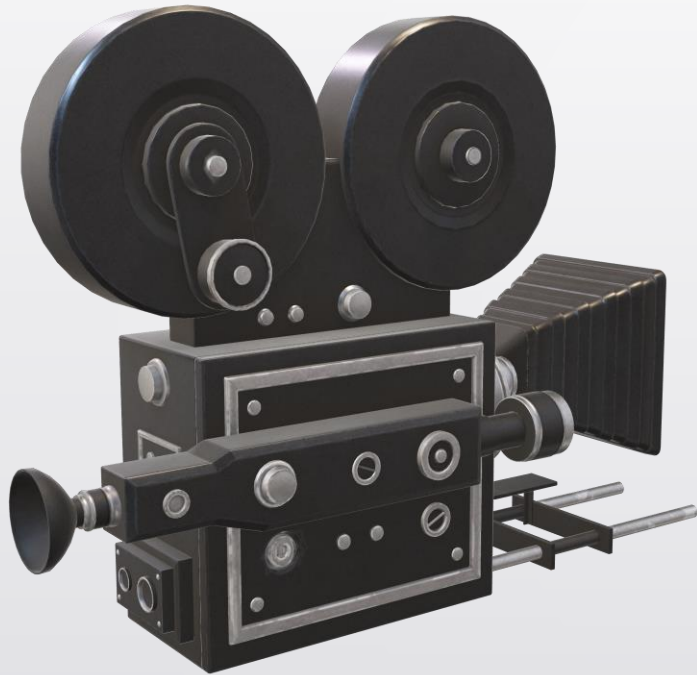


CC IV / GE IV [Semester-IV]

Documentary



Topic: Ethics & Aesthetics of documentary

Bandana Basu Bhowmick



WHAT IS A DOCUMENTARY?

- Documentaries do not present us with real life, instead they construct a particular version of the real world;
- Documentaries use specific film techniques to inform, convince and persuade, as a means to position viewers to respond in specific ways;
- Documentaries mediate meaning; they stand between the subject and the viewer, providing some version or interpretation of this subject



Documentary as a genre.

- A documentary is type of film which creates, through the use of certain conventions, the illusion that the events are not controlled by the filmmakers.

Social functions of documentary : –

To record, reveal, or preserve; – To persuade or promote – To analyse or interrogate – To express

General aims of documentary (there are many more specific aims)

- to entertain
- to educate
- to persuade
- to inform



Audiences expectations

- What we see and hear is grounded, in some way, in the real world;
- The notion of objectivity, impartiality, fairness in representation;
- That the audience wants to learn something



Modes of documentaries

- It is possible to divide documentary, itself a genre, into sub-genres or categories. It is argued that there are so many different types of documentary that we cannot classify them all clearly.
- Expository documentary : uses a narrator (voice of authority) to address audience, explaining and interpreting "the reality" of what is being presented.
- Interactive - the presence of the documentarist (documentary maker) is represented in the film; selection of material is foregrounded



Modes of documentaries

Reflexive - the process is as much about making a documentary as about the subject of the documentary. (covid19 india). Camera and crew are acknowledged, sometimes even part of the action (NB Columbine). • Docu-drama: Dramatic reconstruction of real-life events using actors or original participants.; fictionalised facts.



Forms and styles of documentaries

- Travel / adventure
- Diacritic form (like a diary)
- Fly-on-the-wall (camera as observer)
- Docu-soaps
- Investigative
- Docu-drama
- Personal
- Propaganda



Values of documentaries

- Educative;
- Illuminative (shedding light on a topic or issue);
- Empathetic (engaging us emotionally with a subject);
- Social and political functions (criticising, analysing, satirising).



References:

<https://www.slideshare.net/meganfulham/documentary-presentation-39555861>