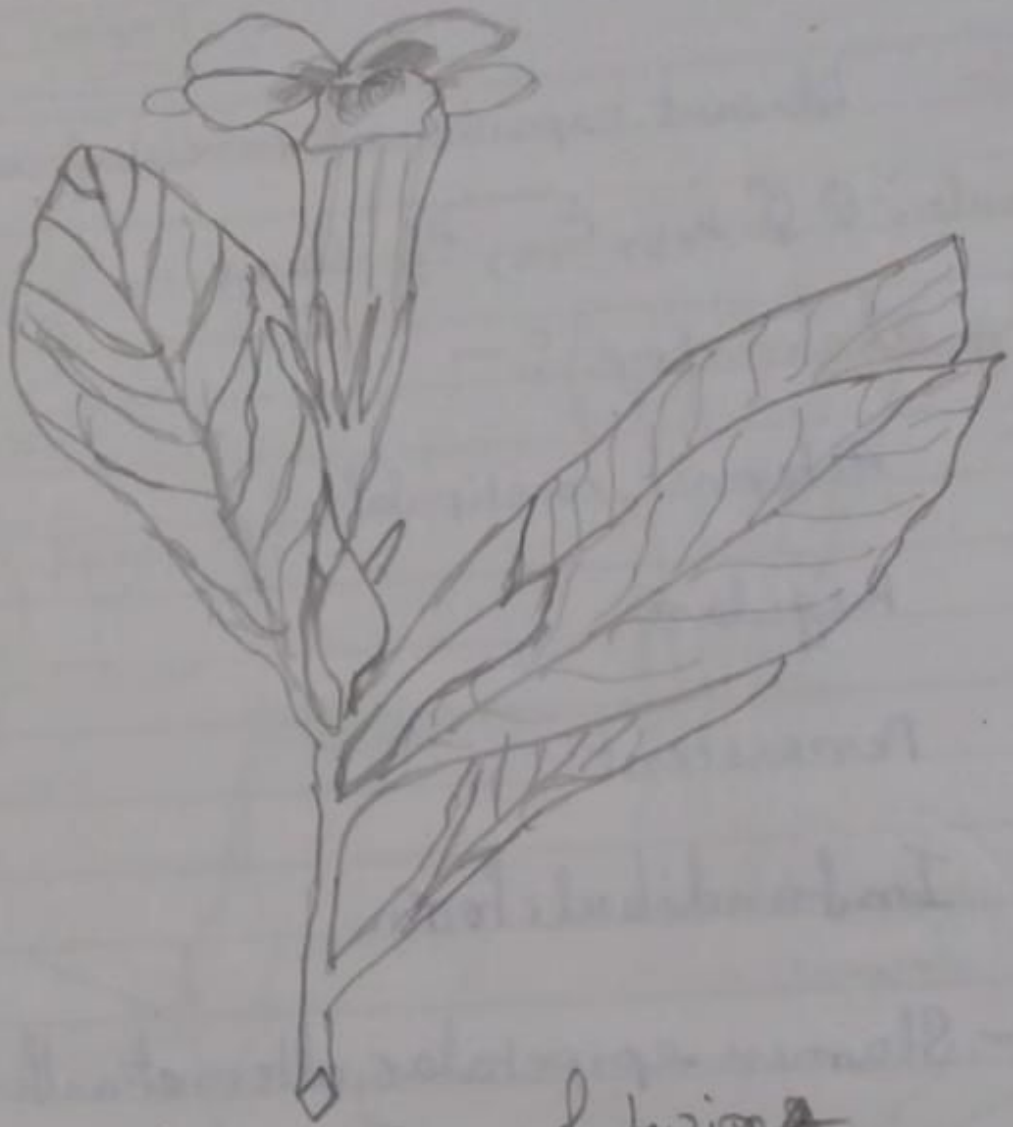


VIVEKANANDA COLLEGE
THAKURPUKUR
KOLKATA-700063

NAAC ACCREDITED 'A' GRADE



Topic: TAXONOMY
Course Title: PLANT DIVERSITY II
Paper: BOT-G-CC-2-2-P
Unit: 1
Semester: II
Name of the Teacher: Mrs. Rinku Halder Sahu and Smt. Mita Basu
Name of the Department: Botany (Morning)



A portion of a ~~twig~~ ~~branch~~



calyx



Specimen :- *Ruellia tuberosa*

Stem :- Herbaceous, branched square solid green hairy with swollen nodes.

Leaf :- Cauline, opposite decussate exstipulate glabrous with scanty hairs on the midrib at the lower surface of leaf simple oval, acute, unicostate reticulate venation axillary dichasial.

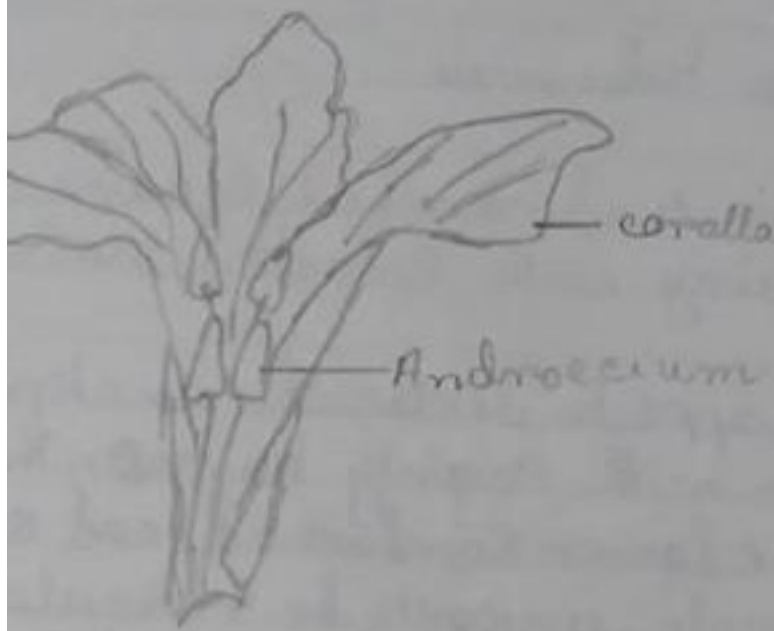
Flower :- Complete, bisexual, slightly zygomorphic pentamerous, hypogynous with bracts and bracteoles, bluish violet.

Calyx :- Sepals five, gamosepalous, valvet persistent

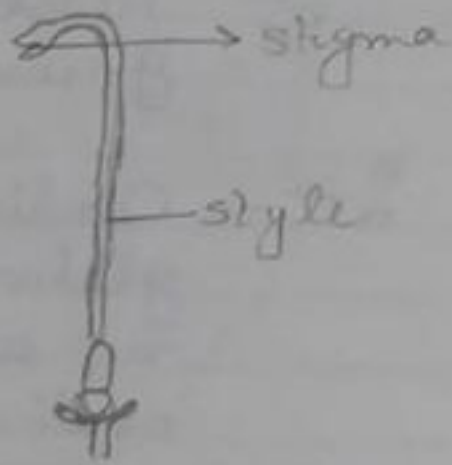
Corolla :- Petals five, gamopetalous slightly irregular in fundibuli form, twisted, bluish violet deciduous.

Androecium :- Stamen 4, didynamous basifixed oblong

Gynoecium :- Carpels 2, syncarpous ovary, superior chambered with ovules arranged in axile presentation style, terminal stigma bifid



corolla with androecium



Gynoecium



T.S of ovary



Floral diagram

Fruit ◦ — Capsule, retinacula with jacobator.

Floral Formula ◦ — $\text{Br Br} \frac{1}{2} \text{ } \overline{\text{K}}_{(5)} \overline{\text{C}}_{(5)} \overline{\text{A}}_{2+2} \overline{\text{G}}_{(2)}$

Identifying characters ◦ —

Stem ◦ — Nodes Swollen

leaf ◦ — Simple exstipulate opposite, decussate

Flowers ◦ — Zygomorphic with bracts and bracteoles

Androecium ◦ — Stamen 4, didynamous.

Gynoecium ◦ — Carpels 2, two chambered with ovules arranged in axile, ~~placentation~~.

Fruit ◦ — Capsule with retinacula and jacobator

———— Hence the supplied plants specimen belongs to the family Acanthaceae.