



STUDY MATERIAL

VIVEKANANDA COLLEGE THAKURPUKUR

NAAC ACCREDITED GRADE—'A'

Subject: Zoology
Topic: Skull Identification[Practical]

Name of the Teacher: Dr.Malabika Bhattacharjee

PARTS OF A TYPICAL SKULL ENUMERATING THE POSITIONS OF THE DIFFERENT BONES

[Ref: Vertebrates Comparative Anatomy, Kardong]

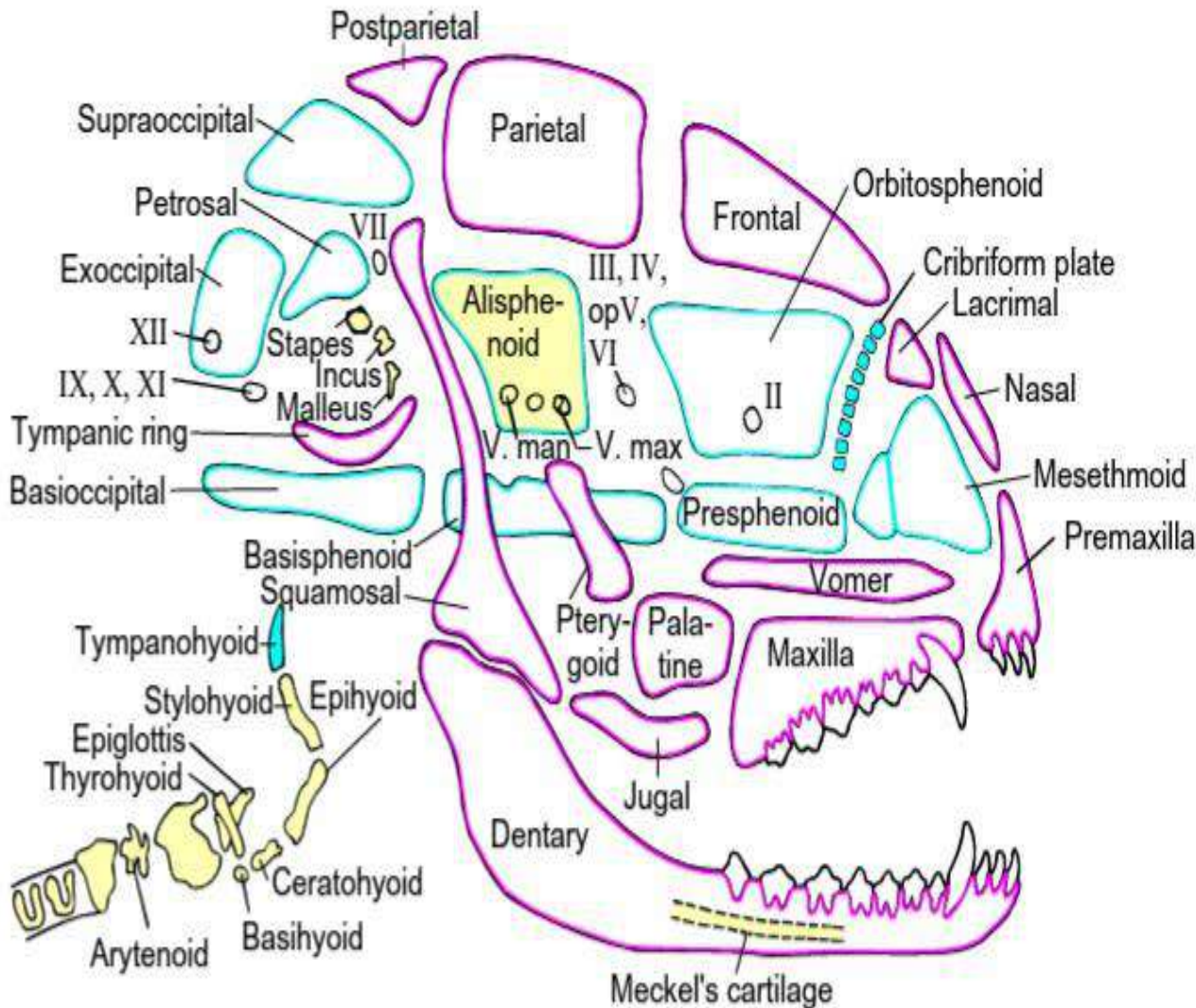


FIGURE 7.54 Diagram of a dog's skull. Sources of the various bones are outlined: dermatocranium (pink), chondrocranium (blue), and splanchnocranium (yellow).

After Evans.

Skull – *Trionyx* sp.

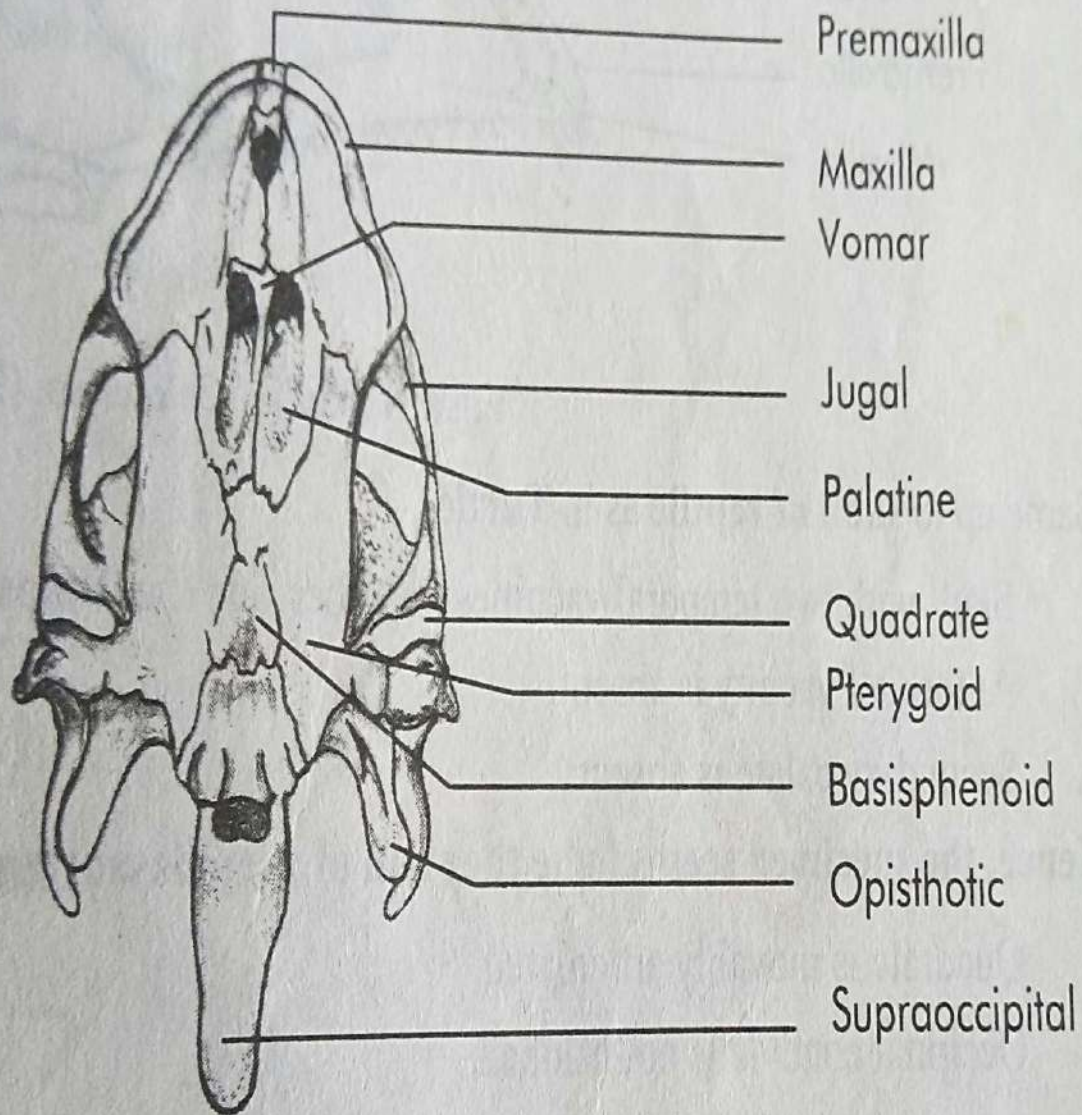
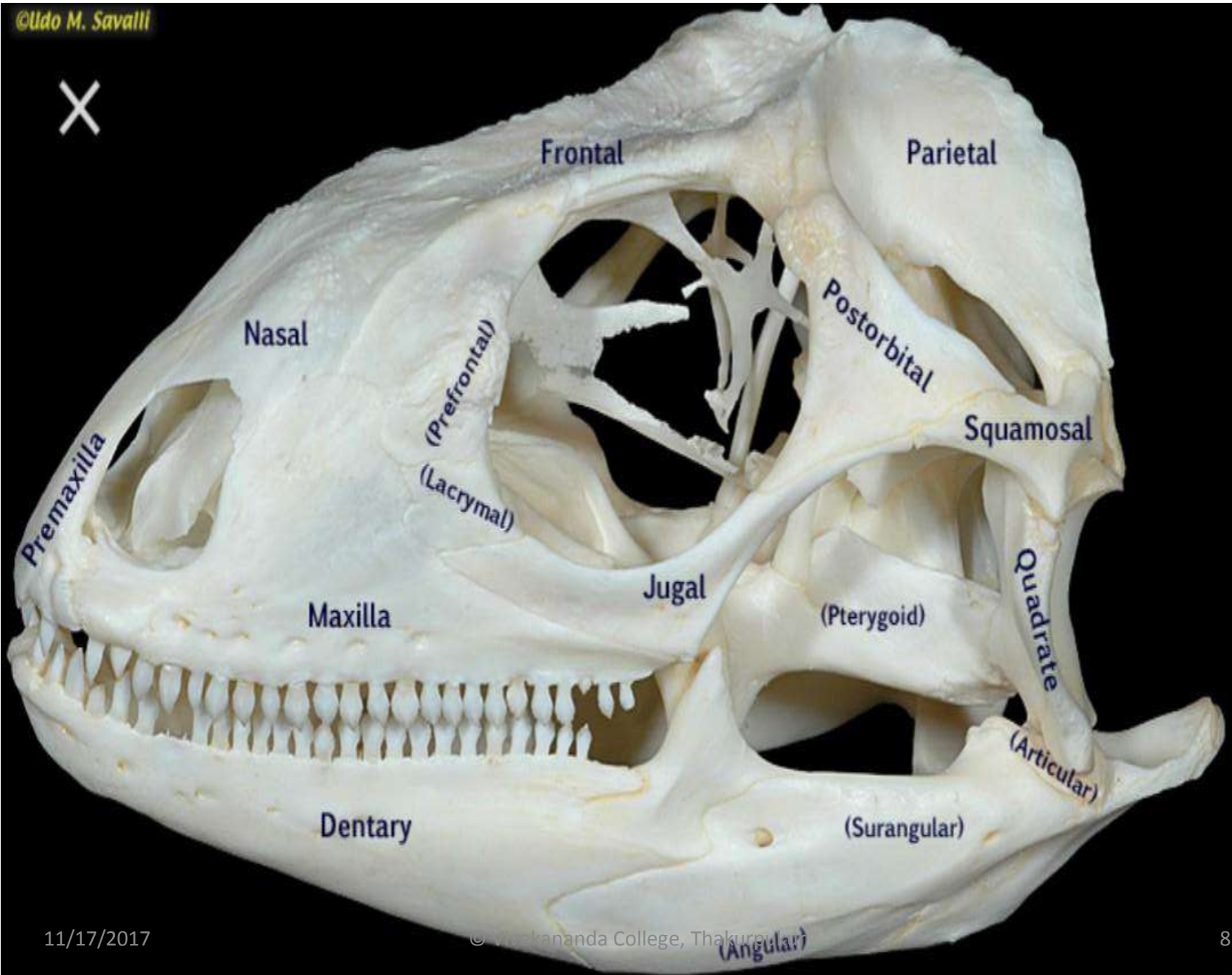


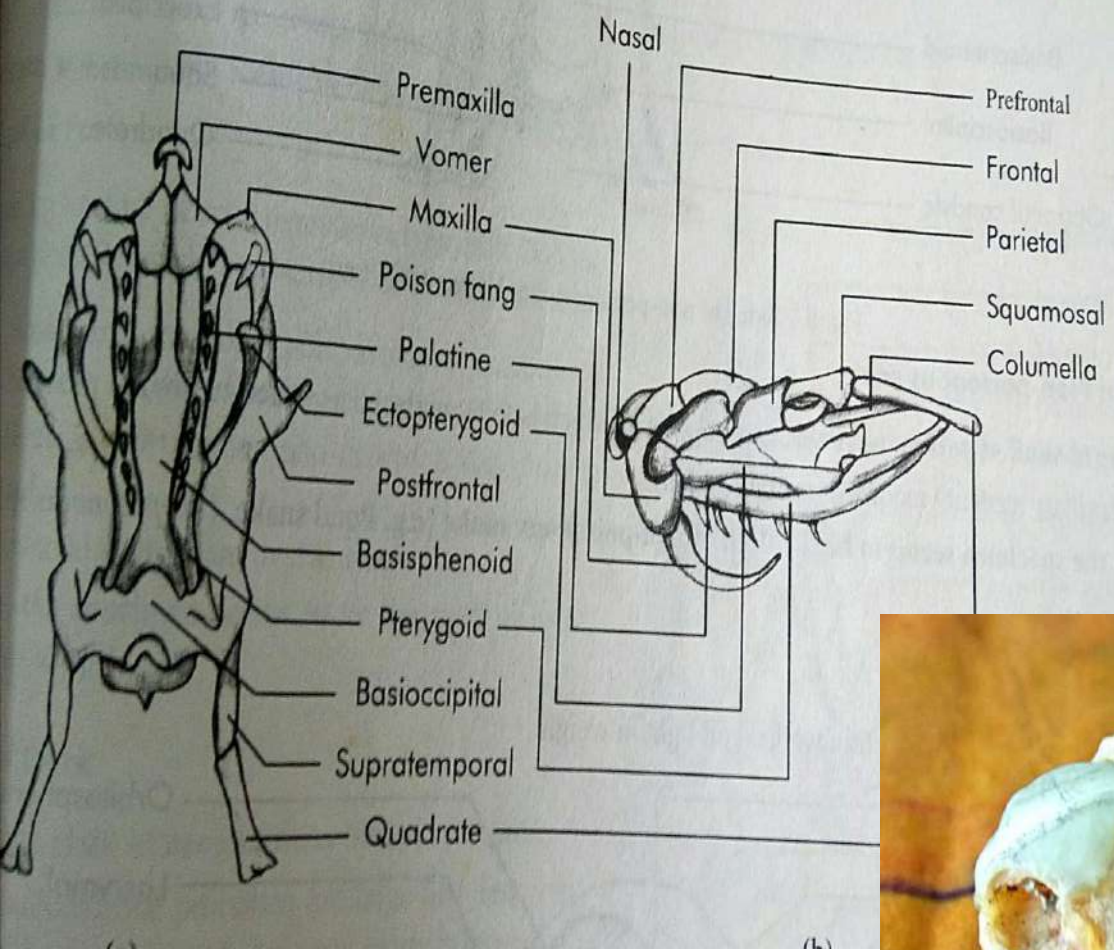
Fig 6.3a Skull of *Trionyx* sp. (ventral view)



Skull –*Calotes* sp.

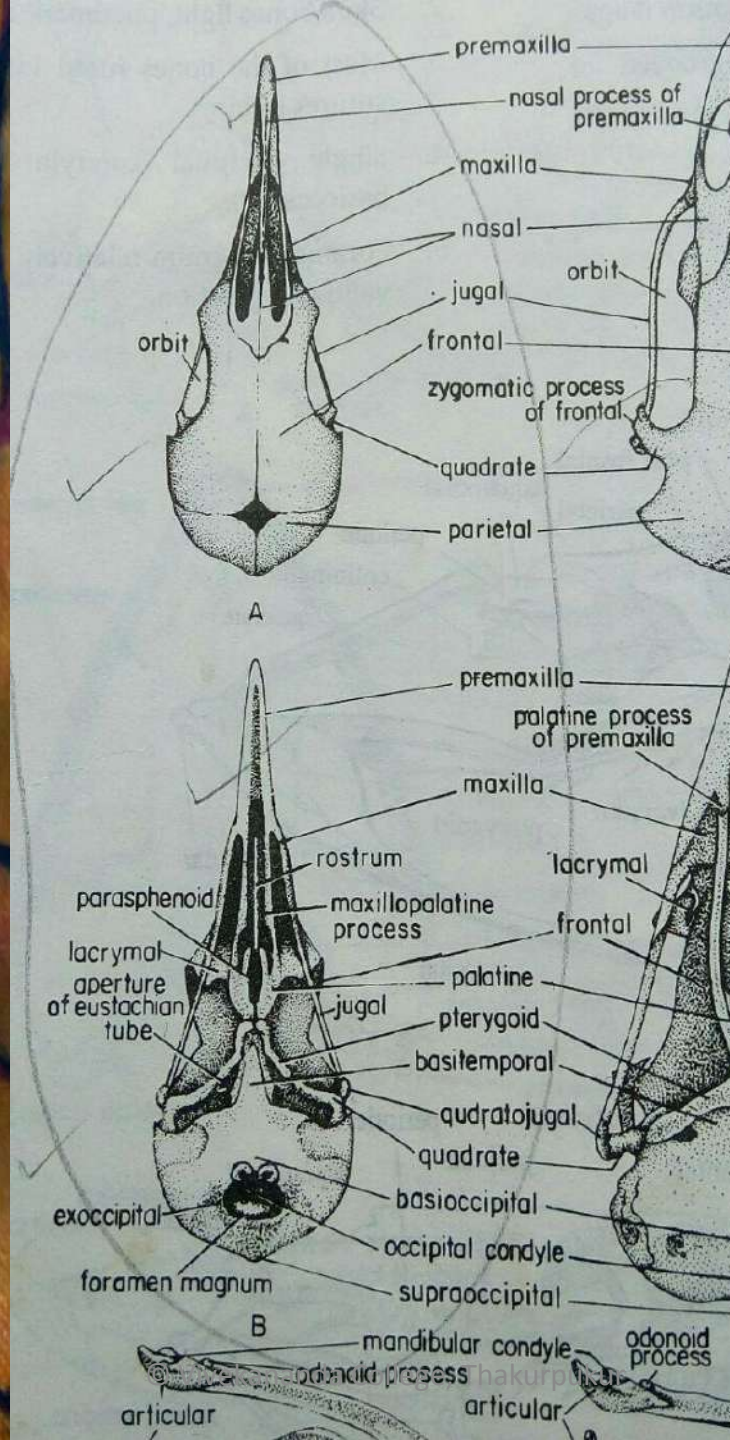


Skull –*Poisonous Snake*



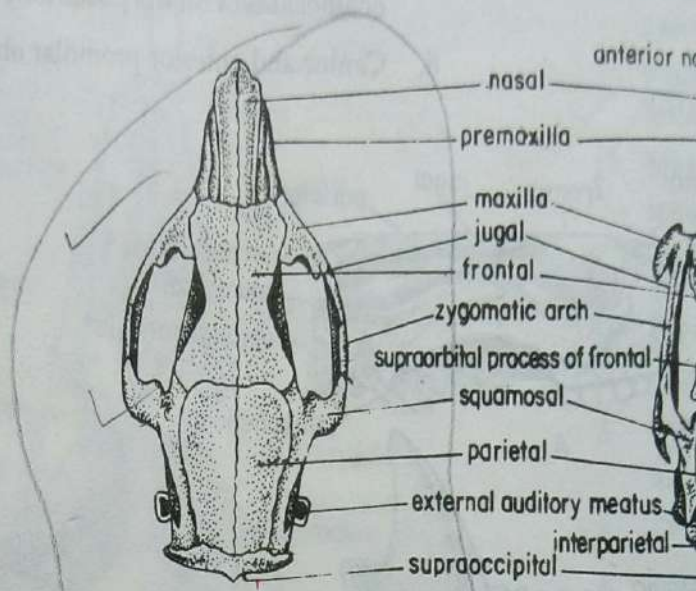
Skull –*Columba* sp.



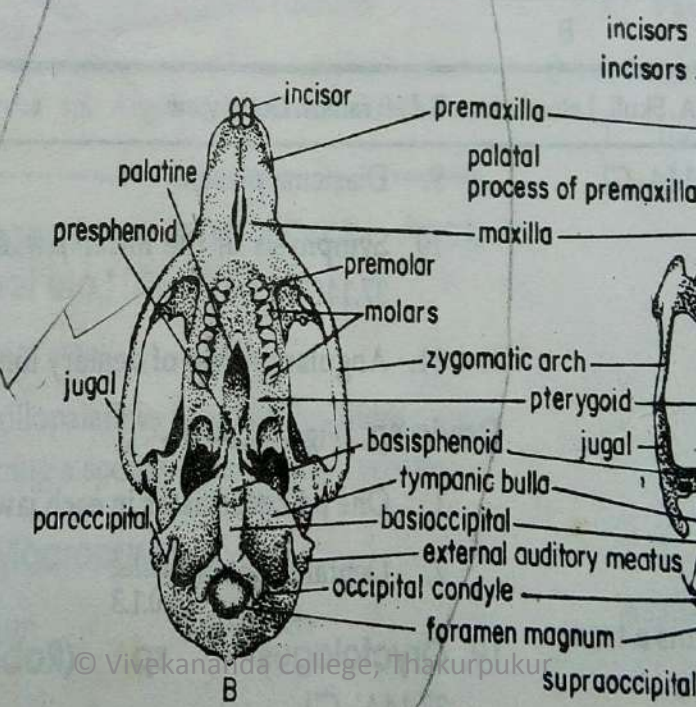


Skull –*Cavia* sp.





A



B



The inset pictures which are used to compare the different Skull specimen have been taken from Practical Zoology, Ghosh and Manna